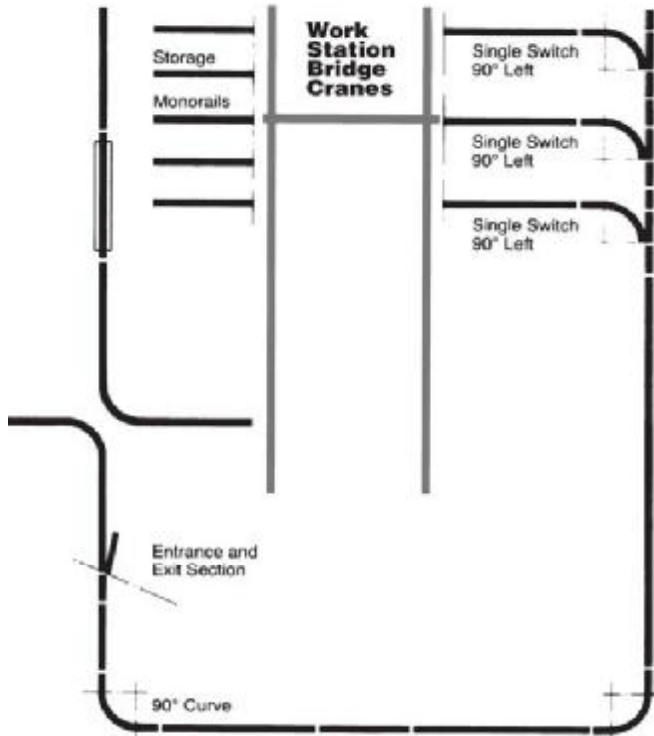


Monorails

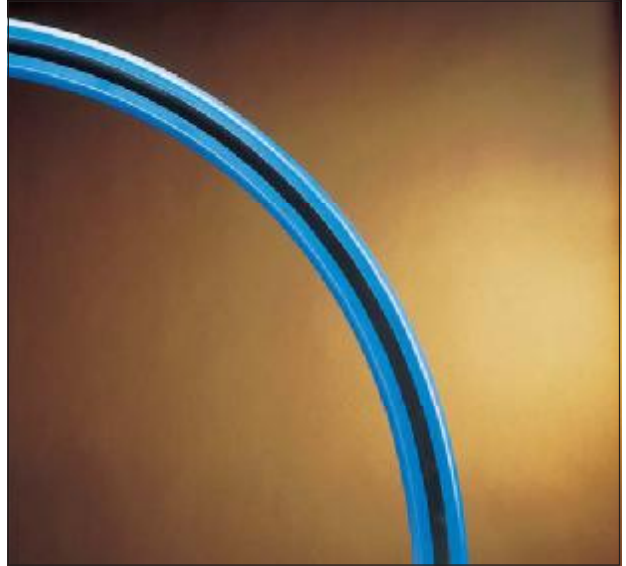
The Solution for True Linear Movement

Gorbel® Work Station Crane Systems can be readily adapted for more sophisticated applications by the addition of extra tracks, curves, switches, and interlocks (transfers) that can be easily integrated into a total system. The pre-engineered modular designs offer the ultimate in flexibility, in layout, and in design for your manufacturing facility.



MONORAIL CURVE

The monorail curve is a section of track that is rolled to provide a 90° curve. The curved sections have a straight section which projects beyond the curve. The curve needs to be supported with three hangers, one in the center, one at one end just *outside* the splice joint, and one at the other end just *inside* the splice joint.



Monorail Curve

INTERLOCKS (TRANSFERS)

Interlocks are used to transfer materials from the working area of the bridge crane to storage monorails, and vice versa. Request the Gorbel® *Interlocks (Transfers)* flyer for additional information.

SWITCHES

Limited sizes of switches can be provided. Please contact the factory for additional information.

CEILING MOUNTED WORK STATION BRIDGE CRANES - MONORAILS

250# CAPACITY	MONORAIL LENGTH (L)	MODEL NUMBER	TRACK SERIES	TRACK MATL.	MAX. L1	T1 in	H1 in	H2 in	L3 in	L7 in	HANGERS (see note)*
	11' 6"	GLM250-11.5	250	Steel	6'	1-1/2	-	1-3/4	5	9	3 @ 365#
		GLMS250-11.5	250	Steel	20'	1-1/2	9	1-3/4	5	9	2 @ 446#
		ALM250-11.5	250	Alum.	20'	2-5/8	-	8	7-1/4	9	2 @ 430#
	23'	GLM250-23	250	Steel	6'	1-1/2	-	1-3/4	5	9	5 @ 365#
		GLMS250-23	250	Steel	20'	1-1/2	9	1-3/4	5	9	2 @ 446#
		ALM250-23	250	Alum.	20'	2-5/8	-	8	7-1/4	13	2 @ 430#
	28'	GLMSL250-28	250	Steel	25'	1-1/2	11	1-3/4	5	9	2 @ 554#
	33'	GLM250-33	250	Steel	6'	1-1/2	-	1-3/4	5	9	7 @ 365#
		GLMS250-33	250	Steel	20'	1-1/2	9	1-3/4	5	9	3 @ 446#
		ALM250-33	250	Alum.	20'	2-5/8	-	8	7-1/4	19	3 @ 430#
	43'	GLM250-43	250	Steel	6'	1-1/2	-	1-3/4	5	13	9 @ 365#
GLMS250-43		250	Steel	20'	1-1/2	9	1-3/4	5	13	3 @ 446#	
ALM250-43		250	Alum.	20'	2-5/8	-	8	7-1/4	26	3 @ 430#	
53'	GLM250-53	250	Steel	6'	1-1/2	-	1-3/4	5	13	11 @ 365#	
	GLMS250-53	250	Steel	20'	1-1/2	9	1-3/4	5	13	4 @ 446#	
	ALM250-53	250	Alum.	20'	2-5/8	-	8	7-1/4	30	4 @ 430#	
	GLMSL250-53	250	Steel	25'	1-1/2	11	1-3/4	5	13	3 @ 554#	
63'	GLM250-63	250	Steel	6'	1-1/2	-	1-3/4	5	19	13 @ 365#	
	GLMS250-63	250	Steel	20'	1-1/2	9	1-3/4	5	19	3 @ 446#	
	ALM250-63	250	Alum.	20'	2-5/8	-	8	7-1/4	36	3 @ 430#	
78'	GLMSL250-78	250	Steel	25'	1-1/2	11	1-3/4	5	46	4 @ 554#	
83'	GLM250-83	250	Steel	6'	1-1/2	-	1-3/4	5	46	17 @ 365#	
	GLMS250-83	250	Steel	20'	1-1/2	9	1-3/4	5	46	5 @ 446#	
	ALM250-83	250	Alum.	20'	2-5/8	-	8	7-1/4	46	5 @ 430#	
103'	GLM250-103	250	Steel	6'	1-1/2	-	1-3/4	5	54	24 @ 365#	
	GLMS250-103	250	Steel	20'	1-1/2	9	1-3/4	5	54	6 @ 446#	
	ALM250-103	250	Alum.	20'	2-5/8	-	8	7-1/4	54	6 @ 430#	
	GLMSL250-103	250	Steel	25'	1-1/2	11	1-3/4	5	54	5 @ 554#	

500# CAPACITY	MONORAIL LENGTH (L)	MODEL NUMBER	TRACK SERIES	TRACK MATL.	MAX. L1	T1 in	H1 in	H2 in	L3 in	L7 in	HANGERS (see note)*
	11' 6"	GLM500-11.5	500	Steel	6'	2-3/4	-	2-3/8	7-1/8	9	3 @ 725#
		GLMS500-11.5	500	Steel	20'	2-3/4	10	2-3/8	7-1/8	9	2 @ 845#
		ALM500-11.5	500	Alum.	20'	2-5/8	-	10	7-1/4	9	2 @ 794#
	23'	GLM500-23	500	Steel	6'	2-3/4	-	2-3/8	7-1/8	9	5 @ 725#
		GLMS500-23	500	Steel	20'	2-3/4	10	2-3/8	7-1/8	9	2 @ 845#
		ALM500-23	500	Alum.	20'	2-5/8	-	10	7-1/4	13	2 @ 794#
	28'	GLMSL500-28	500	Steel	25'	2-3/4	12-3/8	2-3/8	7-1/8	9	2 @ 943#
	33'	GLM500-33	500	Steel	6'	2-3/4	-	2-3/8	7-1/8	9	7 @ 725#
		GLMS500-33	500	Steel	20'	2-3/4	10	2-3/8	7-1/8	9	3 @ 845#
		ALM500-33	500	Alum.	20'	2-5/8	-	10	7-1/4	19	3 @ 794#
	34'	GLMSLX500-34	500	Steel	30'	2-3/4	14-3/8	2-3/8	7-1/8	9	2 @ 991#
43'	GLM500-43	500	Steel	6'	2-3/4	-	2-3/8	7-1/8	13	9 @ 725#	
	GLMS500-43	500	Steel	20'	2-3/4	10	2-3/8	7-1/8	13	3 @ 845#	
	ALM500-43	500	Alum.	20'	2-5/8	-	10	7-1/4	26	3 @ 794#	
53'	GLM500-53	500	Steel	6'	2-3/4	-	2-3/8	7-1/8	13	11 @ 725#	
	GLMS500-53	500	Steel	20'	2-3/4	10	2-3/8	7-1/8	13	4 @ 845#	
	ALM500-53	500	Alum.	20'	2-5/8	-	10	7-1/4	30	4 @ 794#	
	GLMSL500-53	500	Steel	25'	2-3/4	12-3/8	2-3/8	7-1/8	13	3 @ 943#	
63'	GLM500-63	500	Steel	6'	2-3/4	-	2-3/8	7-1/8	19	23 @ 725#	
	GLMS500-63	500	Steel	20'	2-3/4	10	2-3/8	7-1/8	19	4 @ 845#	
	ALM500-63	500	Alum.	20'	2-5/8	-	10	7-1/4	36	4 @ 794#	
64'	GLMSLX500-64	500	Steel	30'	2-3/4	14-3/8	2-3/8	7-1/8	36	3 @ 991#	
78'	GLMSL500-78	500	Steel	25'	2-3/4	12-3/8	2-3/8	7-1/8	46	4 @ 943#	
83'	GLM500-83	500	Steel	6'	2-3/4	-	2-3/8	7-1/8	46	17 @ 725#	
	GLMS500-83	500	Steel	20'	2-3/4	10	2-3/8	7-1/8	46	5 @ 845#	
	ALM500-83	500	Alum.	20'	2-5/8	-	10	7-1/4	46	5 @ 794#	
94'	GLMSLX500-94	500	Steel	30'	2-3/4	14-3/8	2-3/8	7-1/8	54	4 @ 991#	
103'	GLM500-103	500	Steel	6'	2-3/4	-	2-3/8	7-1/8	54	24 @ 725#	
	GLMS500-103	500	Steel	20'	2-3/4	10	2-3/8	7-1/8	54	6 @ 845#	
	ALM500-103	500	Alum.	20'	2-5/8	-	10	7-1/4	54	6 @ 794#	
	GLMSL500-103	500	Steel	25'	2-3/4	12-3/8	2-3/8	7-1/8	54	5 @ 943#	
124'	GLMSLX500-124	500	Steel	30'	2-3/4	14-3/8	2-3/8	7-1/8	54	5 @ 991#	

*This column provides the total number of support hangers with the corresponding vertical load applied by each support hanger (in pounds) based on the "L1" dimensions shown. Up to a 20" hanger drop will be provided by Gorbel. Additional hanger points or longer drops can be provided at an additional charge.

Gorbel® Monorail kits include: monorail track, hoist trolley, end stops, flat wire festooning, festoon gliders (festoon trolleys on steel monorail lengths greater than 63' and all aluminum systems), festoon stack-up section, splice joints and hanger brackets. Sway bracing is required on all systems except flush mounted systems. Sway bracing kits are available but are not included in the crane kit.

Dimensions are for reference only and are subject to change without notice.

CEILING MOUNTED WORK STATION BRIDGE CRANES - MONORAILS

1000# CAPACITY	MONORAIL LENGTH (L)	MODEL NUMBER	TRACK SERIES	TRACK MATL.	MAX. L1	T1 in	H1 in	H2 in	L3 in	L7 in	HANGERS (see note)*
	11' 6"	GLM1000-11.5	1000	Steel	6'	3	-	3	7-7/8	9	3 @ 1,451#
		GLMS1000-11.5	1000	Steel	20'	3	11	3	7-7/8	9	2 @ 1,679#
		ALM1000-11.5	1000	Alum.	20'	2-7/8	-	11	7-7/8	9	2 @ 1,567#
	23'	GLM1000-23	1000	Steel	6'	3	-	3	7-7/8	9	5 @ 1,451#
		GLMS1000-23	1000	Steel	20'	3	11	3	7-7/8	9	2 @ 1,679#
		ALM1000-23	1000	Alum.	20'	2-7/8	-	11	7-7/8	13	2 @ 1,567#
	28'	GLMSL1000-28	1000	Steel	25'	3	13-7/8	3	7-7/8	13	2 @ 1,781#
	33'	GLM1000-33	1000	Steel	6'	3	-	3	7-7/8	13	7 @ 1,451#
		GLMS1000-33	1000	Steel	20'	3	11	3	7-7/8	13	3 @ 1,679#
ALM1000-33		1000	Alum.	20'	2-7/8	-	11	7-7/8	19	3 @ 1,567#	
34'	GLMSLX1000-34	1000	Steel	30'	3	17	3	7-7/8	13	2 @ 1,915#	
43'	GLM1000-43	1000	Steel	6'	3	-	3	7-7/8	19	9 @ 1,451#	
	GLMS1000-43	1000	Steel	20'	3	11	3	7-7/8	19	3 @ 1,679#	
	ALM1000-43	1000	Alum.	20'	2-7/8	-	11	7-7/8	26	3 @ 1,567#	
53'	GLM1000-53	1000	Steel	6'	3	-	3	7-7/8	19	11 @ 1,451#	
	GLMS1000-53	1000	Steel	20'	3	11	3	7-7/8	19	4 @ 1,679#	
	ALM1000-53	1000	Alum.	20'	2-7/8	-	11	7-7/8	30	4 @ 1,567#	
GLMSL1000-53	1000	Steel	25'	3	13-7/8	3	7-7/8	19	3 @ 1,728#		
63'	GLM1000-63	1000	Steel	6'	3	-	3	7-7/8	26	13 @ 1,451#	
	GLMS1000-63	1000	Steel	20'	3	11	3	7-7/8	26	4 @ 1,679#	
	ALM1000-63	1000	Alum.	20'	2-7/8	-	11	7-7/8	36	4 @ 1,567#	
64'	GLMSLX1000-64	1000	Steel	30'	3	17	3	7-7/8	36	3 @ 1,915#	
78'	GLMSL1000-78	1000	Steel	25'	3	13-7/8	3	7-7/8	46	4 @ 1,781#	
83'	GLM1000-83	1000	Steel	6'	3	-	3	7-7/8	46	17 @ 1,451#	
	GLMS1000-83	1000	Steel	20'	3	11	3	7-7/8	46	5 @ 1,679#	
	ALM1000-83	1000	Alum.	20'	2-7/8	-	11	7-7/8	46	5 @ 1,567#	
94'	GLMSLX1000-94	1000	Steel	30'	3	17	3	7-7/8	54	4 @ 1,915#	
103'	GLM1000-103	1000	Steel	6'	3	-	3	7-7/8	54	24 @ 1,451#	
	GLMS1000-103	1000	Steel	20'	3	11	3	7-7/8	54	6 @ 1,679#	
	ALM1000-103	1000	Alum.	20'	2-7/8	-	11	7-7/8	54	6 @ 1,567#	
GLMSL1000-103	1000	Steel	25'	3	13-7/8	3	7-7/8	54	5 @ 1,781#		
124'	GLMSLX1000-124	1000	Steel	30'	3	17	3	7-7/8	54	5 @ 1,915#	

2000# CAPACITY	MONORAIL LENGTH (L)	MODEL NUMBER	TRACK SERIES	TRACK MATL.	MAX. L1	T1 in	H1 in	H2 in	L3 in	L7 in	HANGERS (see note)*
	11' 6"	GLM2000-11.5	2000	Steel	6'	2-7/8	-	3-1/2	8-1/8	9	3 @ 2,894#
		GLMS2000-11.5	2000	Steel	20'	2-7/8	12	3-1/2	8-1/8	9	2 @ 3,137#
		ALM2000-11.5	2000	Alum.	20'	2-7/8	-	13-1/4	12-7/8	9	2 @ 3,046#
	23'	GLM2000-23	2000	Steel	6'	2-7/8	-	3-1/2	8-1/8	9	5 @ 2,894#
		GLMS2000-23	2000	Steel	20'	2-7/8	12	3-1/2	8-1/8	9	2 @ 3,137#
		ALM2000-23	2000	Alum.	20'	2-7/8	-	13-1/4	12-7/8	13	2 @ 3,046#
	28'	GLMSL2000-28	2000	Steel	25'	2-7/8	15-3/8	3-1/2	8-1/8	9	2 @ 3,308#
	33'	GLM2000-33	2000	Steel	6'	2-7/8	-	3-1/2	8-1/8	13	7 @ 2,894#
		GLMS2000-33	2000	Steel	20'	2-7/8	12	3-1/2	8-1/8	13	3 @ 3,137#
ALM2000-33		2000	Alum.	20'	2-7/8	-	13-1/4	12-7/8	19	3 @ 3,046#	
34'	GLMSLX2000-34	2000	Steel	30'	2-7/8	18	3-1/2	8-1/8	13	2 @ 3,402#	
43'	GLM2000-43	2000	Steel	6'	2-7/8	-	3-1/2	8-1/8	19	9 @ 2,894#	
	GLMS2000-43	2000	Steel	20'	2-7/8	12	3-1/2	8-1/8	19	3 @ 3,137#	
	ALM2000-43	2000	Alum.	20'	2-7/8	-	13-1/4	12-7/8	26	3 @ 3,046#	
53'	GLM2000-53	2000	Steel	6'	2-7/8	-	3-1/2	8-1/8	19	11 @ 2,894#	
	GLMS2000-53	2000	Steel	20'	2-7/8	12	3-1/2	8-1/8	19	4 @ 3,137#	
	ALM2000-53	2000	Alum.	20'	2-7/8	-	13-1/4	12-7/8	30	4 @ 3,046#	
GLMSL2000-53	2000	Steel	25'	2-7/8	15-3/8	3-1/2	8-1/8	19	3 @ 3,308#		
63'	GLM2000-63	2000	Steel	6'	2-7/8	-	3-1/2	8-1/8	26	13 @ 2,894#	
	GLMS2000-63	2000	Steel	20'	2-7/8	12	3-1/2	8-1/8	26	4 @ 3,137#	
	ALM2000-63	2000	Alum.	20'	2-7/8	-	13-1/4	12-7/8	36	4 @ 3,046#	
64'	GLMSLX2000-64	2000	Steel	30'	2-7/8	18	3-1/2	8-1/8	36	3 @ 3,402#	
78'	GLMSL2000-78	2000	Steel	25'	2-7/8	15-3/8	3-1/2	8-1/8	46	4 @ 3,308#	
83'	GLM2000-83	2000	Steel	6'	2-7/8	-	3-1/2	8-1/8	46	17 @ 2,894#	
	GLMS2000-83	2000	Steel	20'	2-7/8	12	3-1/2	8-1/8	46	5 @ 3,137#	
	ALM2000-83	2000	Alum.	20'	2-7/8	-	13-1/4	12-7/8	46	5 @ 3,046#	
94'	GLMSLX2000-94	2000	Steel	30'	2-7/8	18	3-1/2	8-1/8	54	4 @ 3,402#	
103'	GLM2000-103	2000	Steel	6'	2-7/8	-	3-1/2	8-1/8	54	24 @ 2,894#	
	GLMS2000-103	2000	Steel	20'	2-7/8	12	3-1/2	8-1/8	54	6 @ 3,137#	
	ALM2000-103	2000	Alum.	20'	2-7/8	-	13-1/4	12-7/8	54	6 @ 3,046#	
GLMSL2000-103	2000	Steel	25'	2-7/8	15-3/8	3-1/2	8-1/8	54	5 @ 3,308#		
124'	GLMSLX2000-124	2000	Steel	30'	2-7/8	18	3-1/2	8-1/8	54	5 @ 3,402#	

*This column provides the total number of support hangers with the corresponding vertical load applied by each support hanger (in pounds) based on the "L1" dimensions shown. Up to a 20" hanger drop will be provided by Gorbel. Additional hanger points or longer drops can be provided at an additional charge.

Gorbel® Monorail kits include: monorail track, hoist trolley, end stops, flat wire festooning, festoon gliders (festoon trolleys on steel monorail lengths greater than 63' and all aluminum systems), festoon stack-up section, splice joints and hanger brackets. Sway bracing is required on all systems except flush mounted systems. Sway bracing kits are available but are not included in the crane kit.

Dimensions are for reference only and are subject to change without notice.

CEILING MOUNTED WORK STATION BRIDGE CRANES - MONORAILS

4000# CAPACITY	MONORAIL LENGTH (L)	MODEL NUMBER	TRACK SERIES	TRACK MATL.	MAX. L1	T1 in	H1 in	H2 in	L3 in	L7 in	HANGERS (see note)*
	23'	GLM4000-23	4000	Steel	6'	2-7/8	-	3-1/2	15-1/8	9	5 @ 5,664#
		GLMS4000-23	4000	Steel	20'	2-7/8	18	3-1/2	15-1/8	9	2 @ 5,995#
	28'	GLMSL4000-28	4000	Steel	25'	2-7/8	20	3-1/2	15-1/8	13	2 @ 6,093#
		GLM4000-33	4000	Steel	6'	2-7/8	-	3-1/2	15-1/8	13	7 @ 5,664#
	33'	GLMS4000-33	4000	Steel	20'	2-7/8	18	3-1/2	15-1/8	13	3 @ 5,995#
		GLM4000-43	4000	Steel	6'	2-7/8	-	3-1/2	15-1/8	19	9 @ 5,664#
	43'	GLMS4000-43	4000	Steel	20'	2-7/8	18	3-1/2	15-1/8	19	3 @ 5,995#
		GLM4000-53	4000	Steel	6'	2-7/8	-	3-1/2	15-1/8	19	11 @ 5,664#
	53'	GLMS4000-53	4000	Steel	20'	2-7/8	18	3-1/2	15-1/8	19	4 @ 5,995#
		GLMSL4000-53	4000	Steel	25'	2-7/8	20	3-1/2	15-1/8	19	3 @ 6,093#
	63'	GLM4000-63	4000	Steel	6'	2-7/8	-	3-1/2	15-1/8	26	13 @ 5,664#
GLMS4000-63		4000	Steel	20'	2-7/8	18	3-1/2	15-1/8	26	4 @ 5,995#	
78'	GLMSL4000-78	4000	Steel	25'	2-7/8	20	3-1/2	15-1/8	46	4 @ 6,093#	
83'	GLM4000-83	4000	Steel	6'	2-7/8	-	3-1/2	15-1/8	46	17 @ 5,664#	
	GLMS4000-83	4000	Steel	20'	2-7/8	18	3-1/2	15-1/8	46	5 @ 5,995#	
103'	GLM4000-103	4000	Steel	6'	2-7/8	-	3-1/2	15-1/8	54	21 @ 5,664#	
	GLMS4000-103	4000	Steel	20'	2-7/8	18	3-1/2	15-1/8	54	6 @ 5,995#	
	GLMSL4000-103	4000	Steel	25'	2-7/8	20	3-1/2	15-1/8	54	5 @ 6,093#	

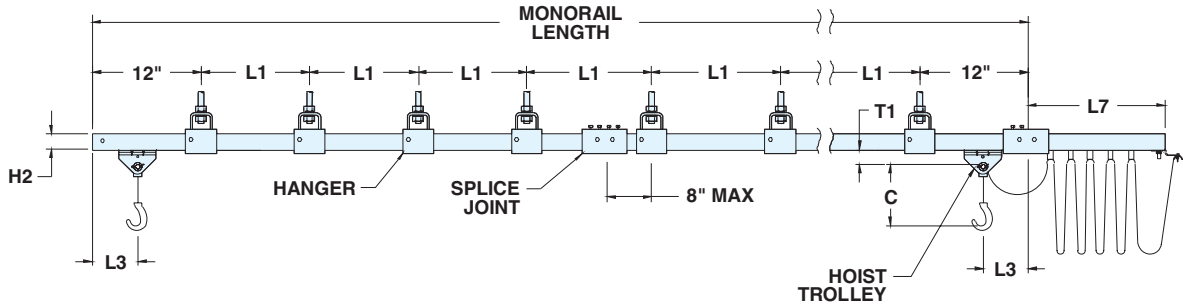
*This column provides the total number of support hangers with the corresponding vertical load applied by each support hanger (in pounds) based on the "L1" dimensions shown. Up to a 20" hanger drop will be provided by Gorbel. Additional hanger points or longer drops can be provided at an additional charge.

Gorbel® Monorail kits include: monorail track, hoist trolley, end stops, flat wire festooning, festoon gliders (festoon trolleys on steel monorail lengths greater than 63' and all aluminum systems), festoon stack-up section, splice joints and hanger brackets. Sway bracing is required on all systems except flush mounted systems. Sway bracing kits are available but are not included in the crane kit.

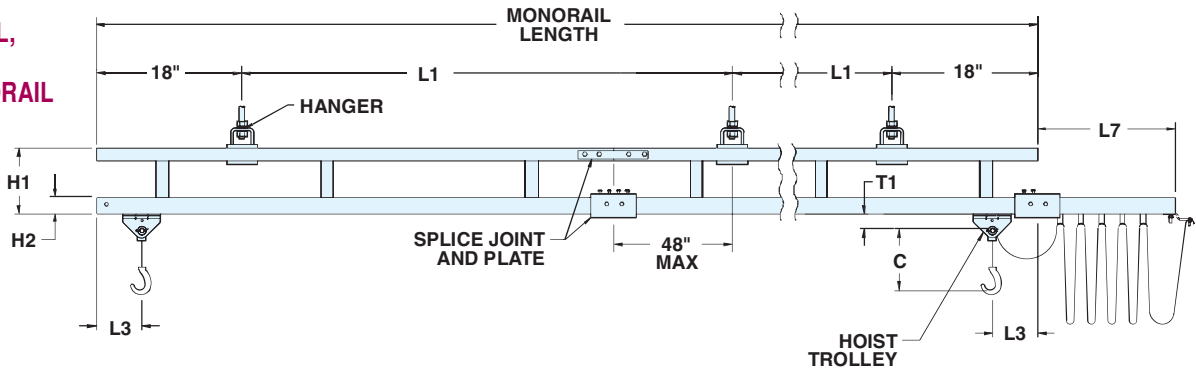
Dimensions are for reference only and are subject to change without notice.

**CEILING MOUNTED WORK STATION
MONORAIL**

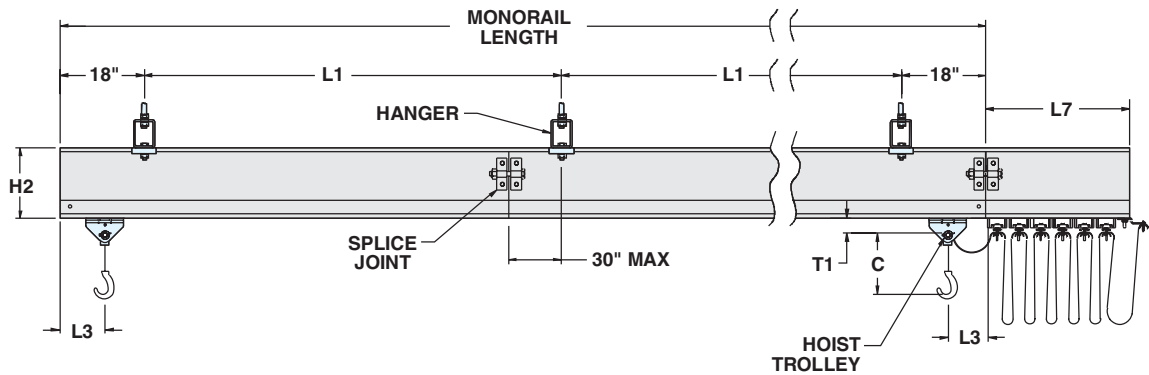
**GLM STEEL
MONORAIL**



**GLMS, GLMSL,
GLMSLX
STEEL MONORAIL**



**ALM
ALUMINUM
MONORAIL**

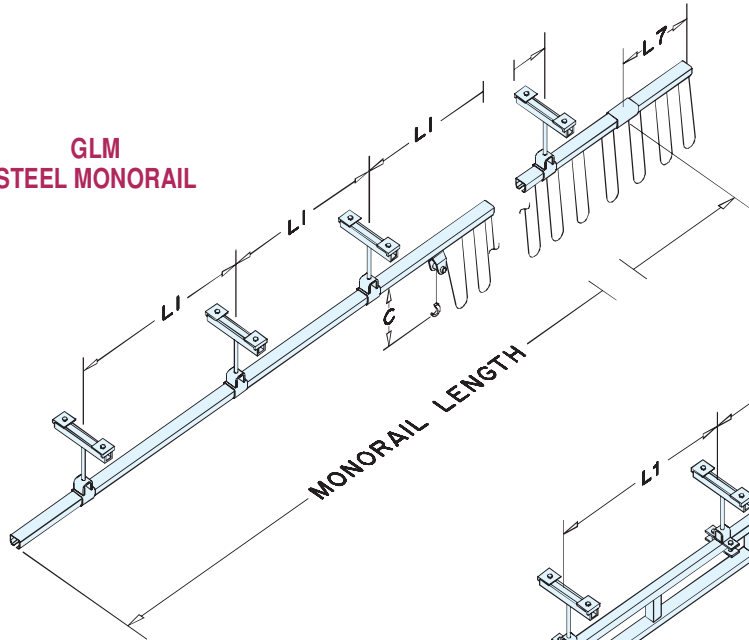


Model Number: _____	Type of hanger required:
Capacity: _____ Pounds	<input type="checkbox"/> Standard hanger with up to 20 inch drop. Support beam flange width _____ inches
Monorail Length: _____ (OAL)	<input type="checkbox"/> Flush mounted, parallel Support beam flange width _____ inches
L1: _____	<input type="checkbox"/> Flush mounted, perpendicular Support beam flange width _____ inches
Are the number of hangers provided sufficient?	<input type="checkbox"/> Special hangers
(See "HANGERS" column on dimensional chart pages.)	<i>Note: Sway bracing is required on all systems except flush mounted systems. Sway bracing kits are available but are not included in the crane kit.</i>
	C: _____ inches (hoist by others)

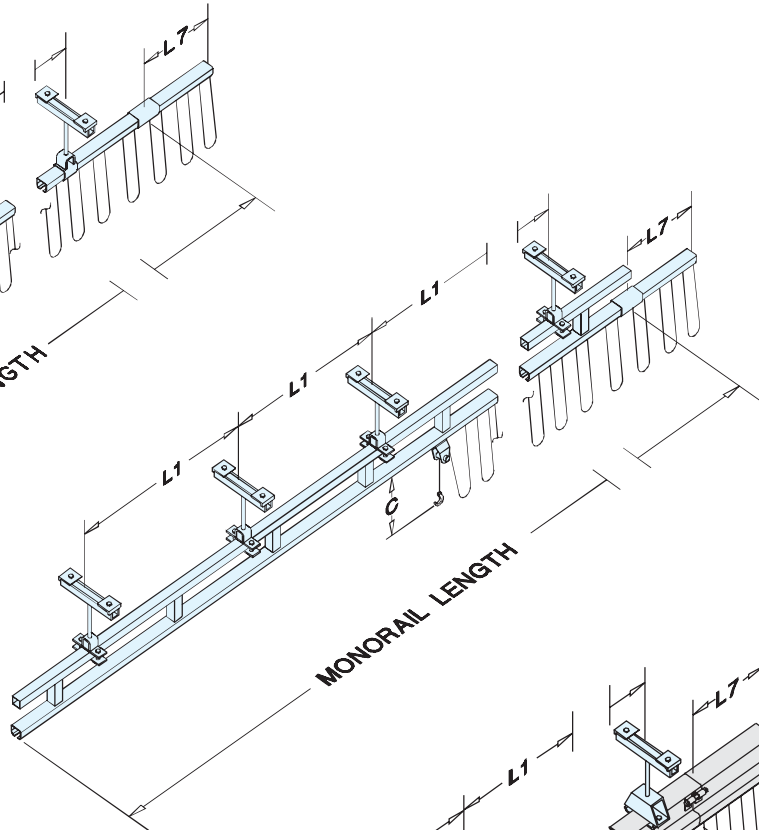
Gorbel[®] Monorails include: monorails, hoist trolley, end stops, flat wire festooning, festoon gliders (festoon trolleys on steel monorail lengths greater than 63 feet and all aluminum systems), festoon stack-up section, splice joints and hanger brackets. Additional hanger points or longer drops, in excess of 20 inches, can be provided at an additional cost (hoist and sway bracing by others). Sway bracing kits are available but are not included in the crane kit. Dimension and design details subject to change without notice.

**CEILING MOUNTED WORK STATION MONORAIL
ISOMETRIC VIEW**

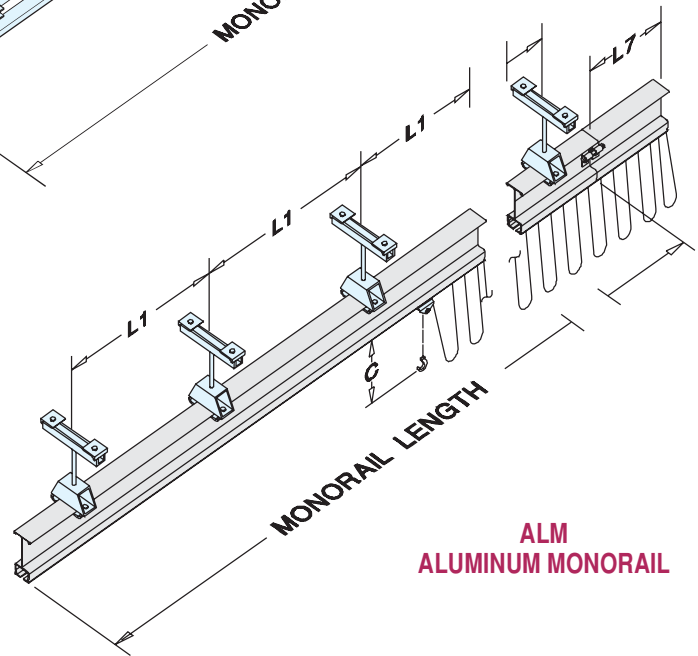
**GLM
STEEL MONORAIL**



**GLMS(SL,SLX)
STEEL MONORAIL**



**ALM
ALUMINUM MONORAIL**



Model Number: _____

Capacity: _____ Pounds

Bridge Length (L): _____ (OAL)

Runway Length: _____ (OAL)

L1: _____ Are the number of hangers provided sufficient?
(See "HANGERS" column on dimensional chart pages.)

Type of hanger required:

- Standard hanger with up to 20 inch drop.
Support beam flange width _____ inches
- Flush mounted, parallel
Support beam flange width _____ inches
- Flush mounted, perpendicular
Support beam flange width _____ inches
- Special hangers

Note: Sway bracing is required on all systems except flush mounted systems. Sway bracing kits are available but are not included in the crane kit.

C: _____ inches (hoist by others)

Gorbel® Monorails include: monorails, hoist trolley, end stops, flat wire festooning, festoon gliders (festoon trolleys on steel monorail lengths greater than 63 feet and all aluminum systems), festoon stack-up section, splice joints and hanger brackets. Additional hanger points or longer drops, in excess of 20 inches, can be provided at an additional cost (hoist and sway bracing by others). Sway bracing kits are available but are not included in the crane kit.
Dimension and design details subject to change without notice.