

Foundationless Jib Cranes

Select capacities, spans, and heights under boom available for Enclosed Track Work Station Jib Cranes (WJS360's) and I-Beam Jibs (FS300's).

What are the benefits of Foundationless Jib Cranes?

You save money!

A poured foundation can cost as much or more than the jib crane itself.

Quick and easy installation

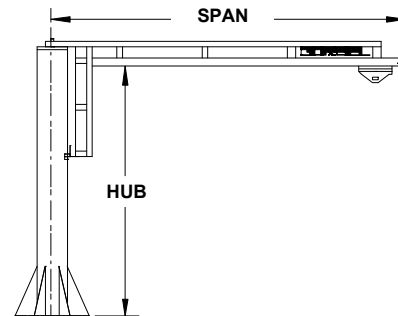
Poured foundations can take up to a week to cure before you can install the jib. Now there's *no* waiting.

Flexible for easy relocation

It's easy to relocate a jib where there's no poured foundation. That means more flexibility in choosing initial jib location. You can place it closer to machines or other obstructions, because there is no need for a large square foot area for a concrete pour.

WSJ360 on 6" reinforced floor

Capacities	HUB (ft.)	Spans (ft.)
250	8 - 14	12, 14, 16
500	8 - 14	8, 10, 12
1000	8 - 14	4, 6, 8



Benefits of a WSJ360:

Ease of Movement

The high strength enclosed track design keeps rolling surfaces clean. This contributes to easier movement and longer life

Ease of Rotation

The steel enclosed track weighs less and therefore rotates easier.

Precise Load Positioning

A hoist trolley with low rolling resistance and lubricated-for-life sealed bearings combined with the easy rotation of the boom makes for efficient load positioning and spotting

Pre-Engineered for Powered Hoists

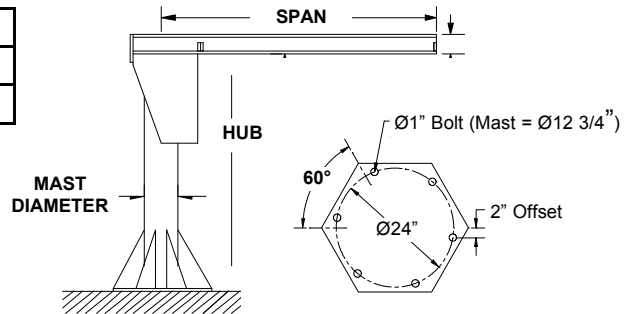
Hoist trolleys are included in the base price of all work station jib cranes.

Foundationless Jib Cranes, cont.

FS300 on 6" reinforced floor

Capacities	HUB (ft.)	Spans (ft.)
1/4 ton	8 - 20	8 - 13
1/2 ton	8 - 20	8 - 9

* Some Jibs require special stiffeners on the baseplate (see drawing)



FS300 Benefits:

Ease of operation

Precision tapered roller bearings in top pivot and trunnion assemblies provide smooth operation and long life.

Safety

Head retaining pin provides the resistance to accidental upward dislodgement of the head.

Pre-Engineered for Powered Hoists

Additional Notes:

- Standard jibs will have a 5-10 day lead time.
- Some jibs require special stiffeners on the baseplate and may take extra time to ship. Please consult customer service.

All Jibs must be:

- Mounted to a 6" reinforced floor
- Mounted with chemical anchor bolts to withstand a minimum of 3,470 lbs. of pull out force
- Centered on a square foot area that is free from cracks, seams, and walls
- Concrete Pressure: 3000 psi and must contain wire mesh reinforcement
- Soil Pressure: 2500 psf