

What is a Patented Track Crane?

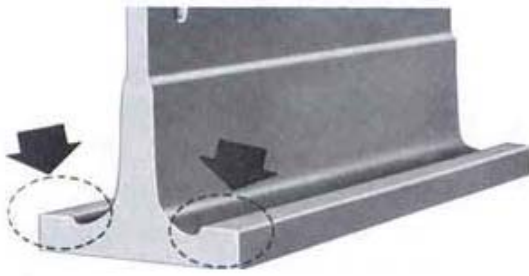


Fig. 101

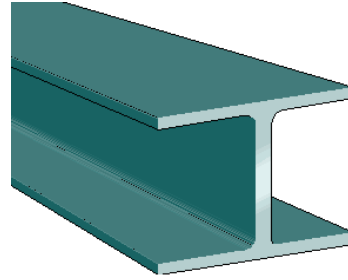


Fig. 102

A patented track crane is fairly standard crane conceptually, with one major exception. The bottom flange is a 3.25” wide specially hardened steel, with raised tread for perfect rolling surface. Note in figure 101 the raised tread and special weld partially up the web to attach the hardened bottom flange. The standard wide-flange beam in figure 102 is rolled in one piece. Patented track bridge or overhead cranes are designed for high-repetition operations in harsh environments such as a foundry. Patented track bridge or overhead cranes are also designed for the precise engineering and installation tolerances necessary in important military facilities and aircraft maintenance facilities. Although the patented track type of overhead or bridge crane is expensive, the purchaser gets what they pay for: a bullet-proof crane system for handling light or heavy loads for generations. A patented track system can be powered or manual push, as the perfect rolling surface on the raised tread makes the crane easy to roll even by hand. Any brand of hoist can be used on the patented track system, provided proper wheels or carrier system is supplied.

PURCHASING A PATENTED TRACK SYSTEM

Dearborn Overhead Crane and Engineering supplies the two most popular types of patented track systems, the Cleveland Tramrail and the Trambeam Corp. patented track system. Both types are well-respected products with their strong points. Cleveland Tramrail has been producing patented track sections for sale through overhead crane manufacturers like Dearborn Overhead Crane since 1919. Trambeam Corp. has been producing patented track beams for almost as long. Dearborn Overhead Crane is equipped to build overhead crane systems using both Cleveland Tramrail and Trambeam Corp. beams. Dearborn Overhead Crane has thousands of overhead or bridge cranes in service around the United States with patented track beams.

CARING FOR MY PATENTED TRACK SYSTEM

First, it's important to note that although the maintenance expenditures on a patented track system are likely much lower than a typical underhung crane using wide-flange steel beams, a OSHA inspection is required on the same intervals as any overhead or bridge crane or lifting device. Safety of workers and protection of product is key.

Finding parts for your patented track bridge crane, overhead crane, or monorail system is easy. Dearborn Overhead Crane has the original drawings on many overhead cranes installed nationwide. On bridge cranes we don't have drawings for, we have good relationships with warehouses and manufacturers nationwide producing genuine parts for products once sold under names such as Cleveland Tramrail, Shepard Niles, Trambeam, White-Trambeam, Kelly Sales, etc... It's as easy as picking up the phone and dialing 800-CRANE-58 for your overhead crane parts needs.